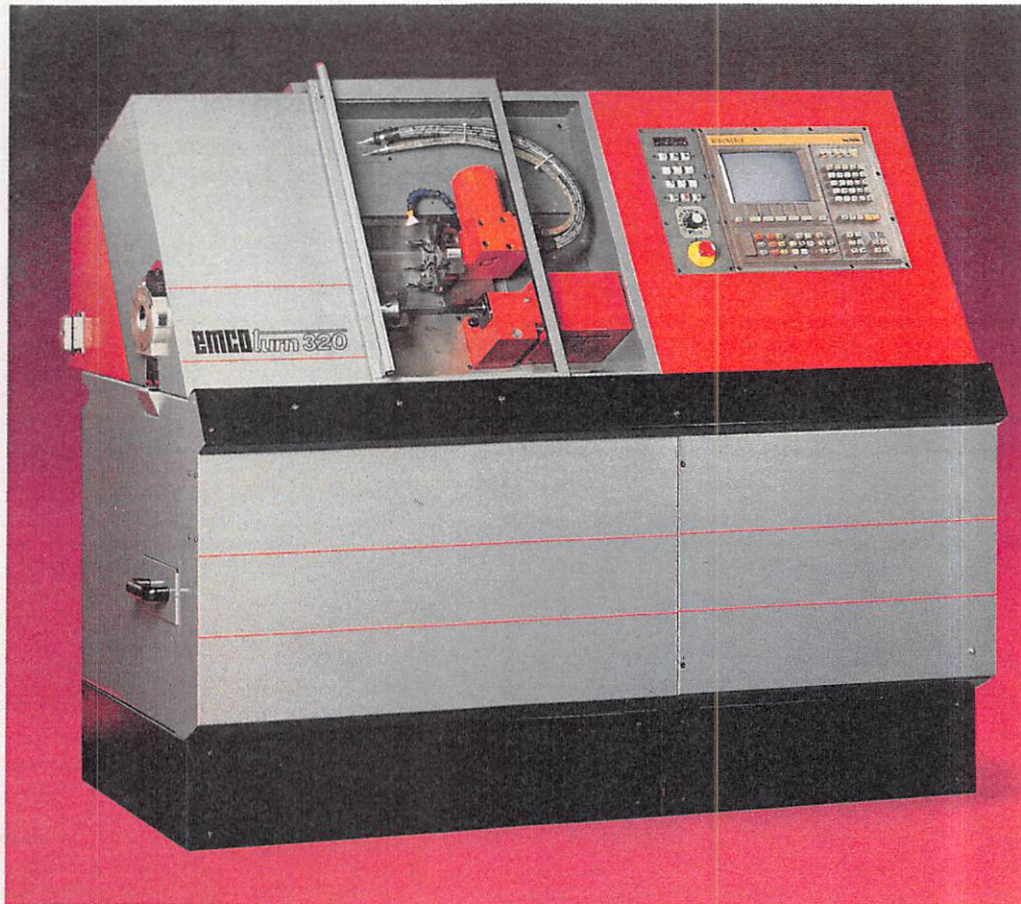


A Systemized Concept

EMCO CNC Technology

EMCOTURN 320

*CNC lathe
for industrial production*



Reasonable price, highly economical, low production cost, flexibility and ergonomics – these are the convincing characteristics of the EMCOTURN 320.

ELCOMP (PTY) LTD

P.O. BOX 5604
Halfway House
1685

E-Mail amatt@icon.co.za

Website: www.elcompptyltd.co.za

Tel +27 11 238 7997/6
Cell: +27 82 443 3753

strica

emco

EMCO turn 320

Your Advantage in Competition

Application

The EMCOTURN 320 can be used for chuck work as well as shaft and bar machining. It is the ideal solution for the demanding serial production of small parts. Optionally with hydrostatic bar feed, bar grip or automatized with gantry loader.

Technical features

Solid, torsion-resistant structure, robustly-dimensioned working spindle, hardened and ground guideways, automatic central lubrication for the guideways, automatic central lubrication, high positioning and reproduction accuracy, precise ball-screw spindle and extremely dynamic drives.

○ Chucking system operated by pneumatic hollow clamping cylinder. Collet holder for collets 148 E (chucking capacity between 3 and 23 mm) or 385 E (chucking capacity between 2 and 25.5 mm).

Power chuck dia. 95 mm, 3 jaws, 25.5 mm bore.

○ 8-station tool turret: for inside and outside machining.

○ Coolant equipment: tank capacity 80 l, max. delivery: 15 l/min.

○ Compressed-air conditioner with individual regulation for hollow clamping cylinder, tailstock sleeve, workpiece driver, equipped with filter and oil trap.

○ Automatic approaching of reference point.

Technical data

WORKING RANGE

Swing over bed 180 mm

Swing over cross slide 75 mm

Turning diameter (theoretically) 120 mm

Size of workpiece for chuck and tailstock dia. 75 mm

length 120 mm

Size of workpiece for collet and tailstock dia. 22/25.5 mm

length 129 mm

Longitudinal travel

(Z-axis) 172 mm

Cross travel (X-axis) 55 mm

Headstock:

Spindle bore dia. 30 mm

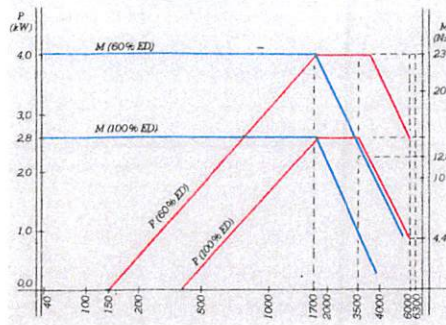
Hole through connecting tube dia. with collet 385 E 26 mm

Main drive:

A.C., 100/40% duty cycle 2.6/4.0 kW

Max. torque 23 Nm

Power and torque diagram



Speed range (infinitely variable) 0-6300 rpm

FEED DRIVE

A. C. motors in X and Z-axis

Feeding force long./trans. 3000 N

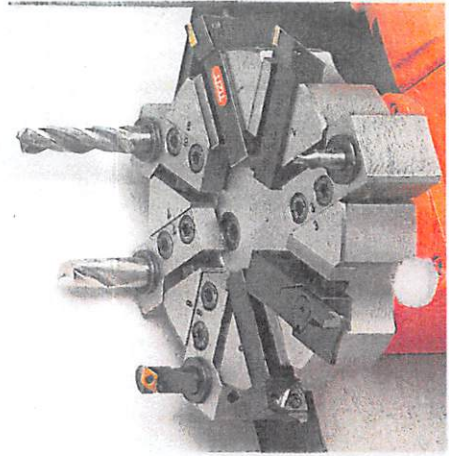
Rapid feed long./trans. 6 m/min

Acceleration time in X- and Z-direction from 0 to 6 m/min 0.05 sec

TOOL SYSTEM

Autom. bidirectional 8-station tool turret

Number of tool stations optionally 8 exterior/8 interior



Tool clamping

shank 12 x 12 mm

and bore dia. 16 mm

Cycle time per station 0.4 sec

TAILSTOCK

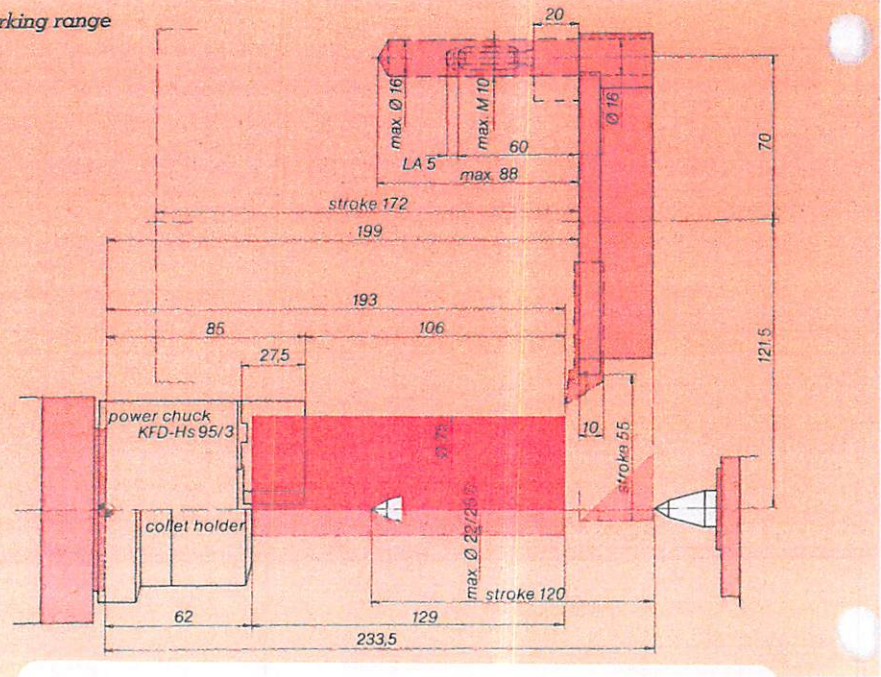
Live centre integrate

Sleeve dia. 35 mm

Stroke of sleeve 120 mm

Sleeve thrust 800-2500 N

Working range



ELCOMP (PTY) LTD

P.O. BOX 5604

Halfway House

1685

E-Mail amatt@icon.co.za

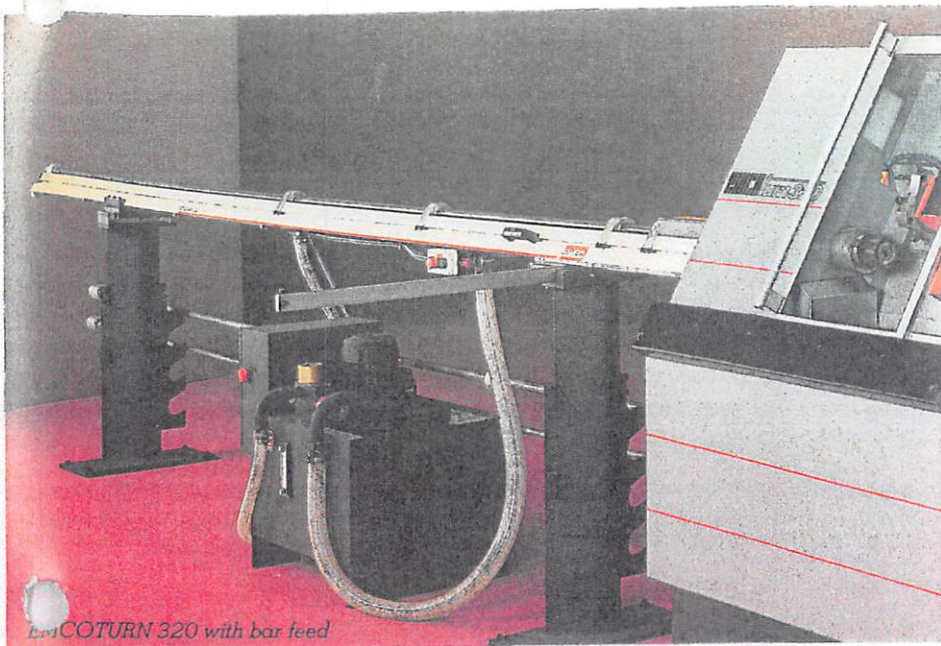
Website: www.elcompptyltd.co.za

Tel +27 11 238 7997/6

Cell: +27 82 443 3753

emco

*A
Systemized
Concept*



EmCOTURN 320 with bar feed

CHUCKING SYSTEM

*Hollow clamping cylinder with connect-
ing tube
Clamping power.... 3000–12000 N
Clamping pressure
adjustable..... 2–8 bar
Bar dia..... 2–25.5 mm
Actuation..... electro-pneumatically*



LUBRICATION SYSTEM

*Main spindle..... grease lubrication
Ball-screw spindles... grease lubrication
Guideways..... central oil lubrication*

Power supply
..... 3x380 V, 50/60 Hz, 7 kVA

Air supply..... 6 bar

DIMENSIONS

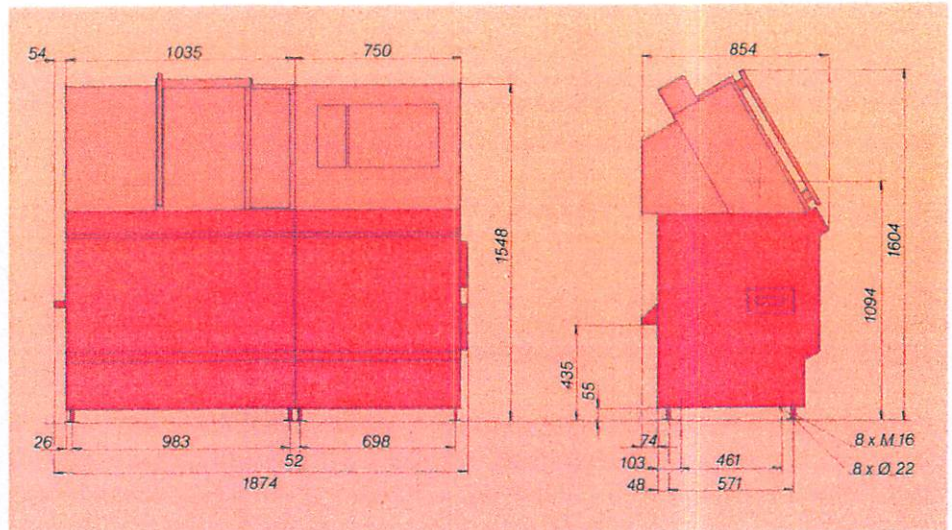
Centre height above floor.. 1094 mm

Overall height..... 1604 mm

Required floor

space 2200 x 1000 mm

Weight incl. control... approx. 750 kg



BASIC EQUIPMENT

*8-station tool turret, hollow clamping
system with connecting tube, power
chuck, pneumatic unit, tailstock, work-
piece driver, central lubrication,
coolant equipment, machine lamp,
complete cover incl. chip tray, docu-
mentation.*

**A good choice:
EMCOTURN 320**

CONTROL
SINUMERIK or FANUC OTB

ELCOMP (PTY) LTD

P.O.BOX 5604
Halfway House
1685

Tel +27 11 238 7997/6
Cell: +27 82 443 3753

E-Mail amatt@icon.co.za

Website: www.elcompptyltd.co.za